



TechExcel DevSuite

Improve Quality and Productivity with Modern ALM

TechExcel DevSuite provides an integrated platform for requirements management, project planning, issue and task tracking, and quality management.

DevSuite empowers organizations to:

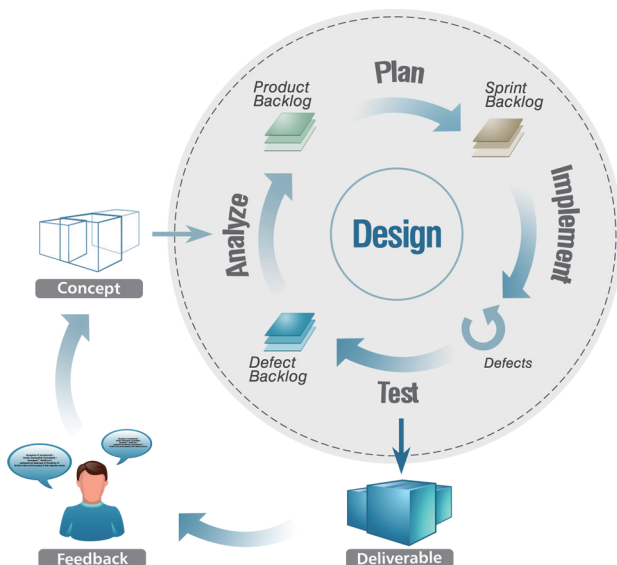
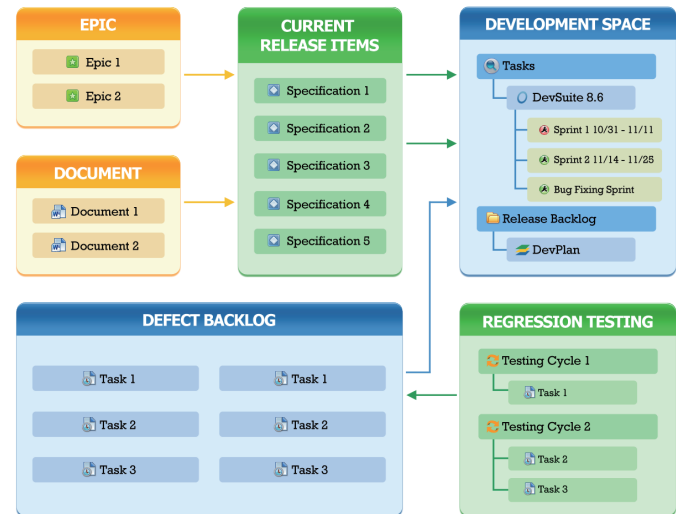
- Manage both agile and traditional development projects in a single application
- Realize superior QA planning and management, integrated with both requirements and defect tracking
- Capture ideas, organize information and drive implementation from a powerful requirements system
- Effectively plan projects, monitor progress and manage resources across multiple teams and locations

DevSuite was designed with one fundamental principle in mind:

Success can only be achieved and sustained within a balanced and structured environment that encourages teamwork and promotes self-motivated performance.

Both agile and traditional development teams alike are effectively supported and managed using DevSuite. Agile development features such as fixed length iterations and burndown reports integrate seamlessly with QA test cycle management. The fully supported product backlog does not replace a traditional requirements system, but rather integrates with the only requirements management tool to support true two-way MS Word integration to add complementary functionality when desired.

This means DevSuite can allow you to manage development your way – you create a solution that truly fits your needs.



What makes DevSuite different?

With tools to effectively support both agile and traditional processes, DevSuite takes a modern approach by allowing you to manage development your way. Achieve balanced and sustainable development with a methodology-agnostic solution that truly fits your needs.

Two ways to try DevSuite Today!

- Try live instantly on our demo system
- Request a demo and free evaluation system



www.techexcel.com/devsuite

DevSpec — Requirements Management

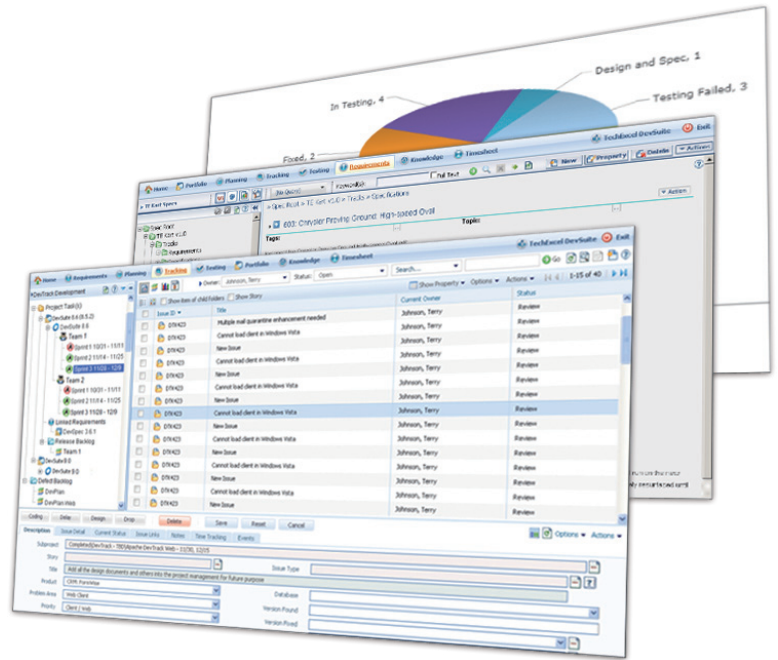
DevSpec contains the only true two-way MS Word integration that allows users to effortlessly import documents and then continue to update them using MS Word. Additionally, DevSpec enables organization-wide collaboration for the management of requirements, specifications, product ideas or agile stories, with integration points that allow you to drive development and testing directly from completed requirements. Whether you wish to adopt a simple agile process for building a product backlog or need to implement a defined and regulated requirements process, you will quickly achieve full traceability throughout the project lifecycle.

DevTrack — Implementation and Defect Tracking

DevTrack comprehensively tracks and manages all aspects of a development project, from feature stories and implementation tasks to product defects and change requests. Teams can effectively plan, organize and execute development work, and with tools to support both agile and traditional practices, DevTrack can easily be configured to fit your needs.

DevTest — QA Test Management

From test case creation, planning and execution through defect submission and resolution, DevTest manages the complete quality lifecycle. Implement quality processes earlier in the development lifecycle to manage shorter deadlines, address complex contemporary testing



About TechExcel

TechExcel unifies the enterprise by bridging the gap between product development and service / support. This end-to-end environment empowers companies to optimize the relationship between these important organizations without sacrificing autonomy or business processes and provides a collaborative environment that significantly saves time and resources.

Other TechExcel Products							
							
DevSpec	DevTrack	DevTest	DevPlan	Portfolio	KnowledgeWise	ServiceWise	CustomerWise
Requirements management	Issue and task tracking	Complete quality management	Project and agile planning	Product portfolio management	Enterprise wiki & knowledge management	IT service management	Customer support tracking

System Requirements

Operating System: Windows 2000 / XP / Vista / 7

Database: Microsoft SQL Server 2008 and above, Microsoft SQL Express 2000 and above, Oracle 9i and above, MySQL 5.0 and above

Application Server: Microsoft IIS 5.0 and above

Framework: .Net 2.0 and above

Supported Web Browsers: Internet Explorer 6.0 and above, Google Chrome 5.0 and above, Firefox 3.0 and above, Safari 4.0 and above

Supported Virtual Servers: VMware Server, VMware ESX