



TechExcel DevTest

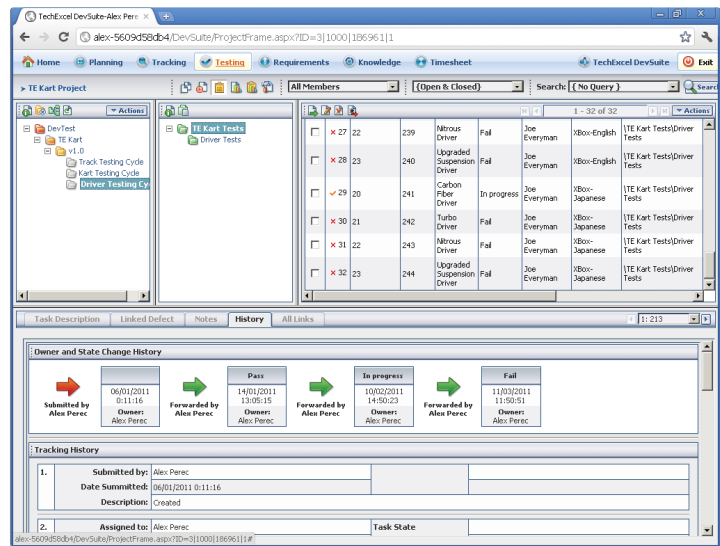
Simply the Smarter Way to Manage Your Testing

DevTest provides you with total control of every aspect of your testing process from test planning and team management to analyzing your test results. DevTest enables you to create and manage release and test cycles, plan and assign test tasks to your testing teams, execute test coverage, and submit product defects all from within a single application.

Best of all, DevTest crunches the numbers for you while your team is testing, providing built-in, dynamic test analysis without having to break out the spreadsheets. DevTest, the simply smarter way to manage your testing.

Benefits

- Gain control over product quality with real-time test results reporting, tracking and analysis that let's you know what has been tested and what still needs to be done.
- Improve test standardization, re-use, and revision control using a centralized test library.
- Increase your team's productivity with reduced data entry, definable test interfaces, and process automation.
- Ensure ultimate accountability for all test phases with detailed histories of test cases, data and test results.



DevTest Features Include:



Comprehensive test coverage management: DevTest enables you to create, manage, analyze, and re-use your test coverage in a central repository improving standardization and efficiency.



Wizard-driven test scheduling and assignment: The DevTest planning wizards take the guesswork out of test assignment. DevTest enables you to define re-usable queries that identify the tests that need to be run.



Web-based architecture: DevTest offers a full-featured Web client. No matter whether your testers are in the office or across the globe they can always stay connected with DevTest.



Automated Testing Integrations (TestLink): TestLink provides an API to integrate with popular automated testing tools: add, schedule and launch automated tests all from within DevTest and then track the automation results with real-time dashboards and reports.



Sophisticated workflow: DevTest enables you to define workflow rules for test coverage creation and task execution. You may also create triggers that automatically notify and re-assign test tasks whenever they are overdue.



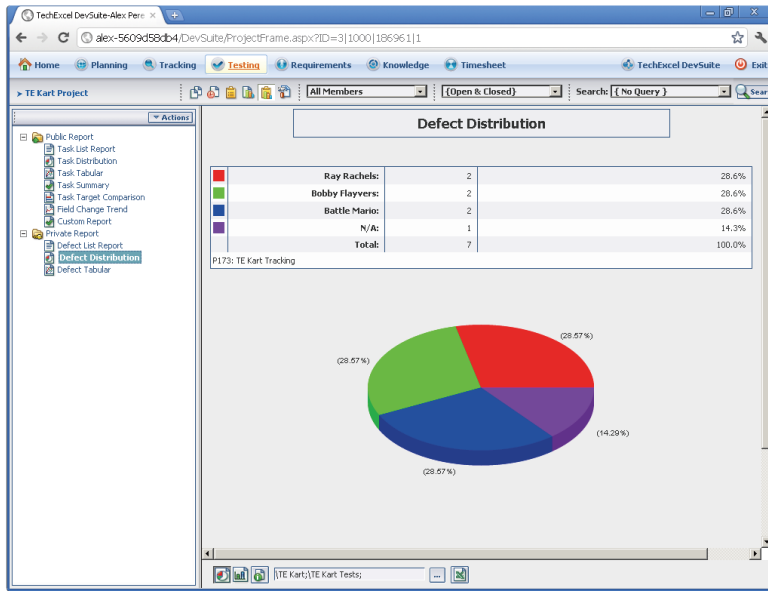
Automatic defect submission: DevTest enables you to automatically submit product defects to development projects and automatically link test tasks to the product defects submitted.



Built-in reports and analysis: Built-in presentation quality reports enable you to easily analyze testing trends, team performance, and defect capture metrics.



Fully customizable user interface: DevTest offers extensive customization options including user-defined field labels, field types, drop-down menu options, master-detail relationships, and custom reports. DevTest enables you to create the tool you want—an application that meets your testing needs and optimizes your testing processes.



Reports

The DevTest reporting view enables you to create a variety of presentation quality reports. You can base your DevTest reports on specific query conditions or dynamically generate reports using the tool bar.

DevTest report types include customizable text reports for test coverage lists and graphic reports for test task or defect distribution and trends. Graphical reports can be generated to show task status trends, task estimated and actual times, and test team workload analysis. By combining robust issue-level search conditions with team member and progress status filters, DevTest dynamically displays focused and relevant reports.

Having our internal QA teams and studio development teams on the same system enables us to improve our communication and more efficiently coordinate our workflow throughout various parts of the company.

Jim Summers, VP of Quality Assurance Activision

Two ways to try DevTest Today!

- Try live instantly on our demo system
- Request a demo and free evaluation system



www.techexcel.com/devtest

About TechExcel

TechExcel unifies the enterprise by bridging the gap between product development and service / support. This end-to-end environment empowers companies to optimize the relationship between these important organizations without sacrificing autonomy or business processes and provides a collaborative environment that significantly saves time and resources.

| Other TechExcel Products | | | | | | | |
|--------------------------|-------------------------|-----------------------------|----------------------------|------------------------------|--|-----------------------|---------------------------|
| | | | | | | | |
| DevSpec | DevTrack | DevTest | DevPlan | Portfolio | KnowledgeWise | ServiceWise | CustomerWise |
| Requirements management | Issue and task tracking | Complete quality management | Project and agile planning | Product portfolio management | Enterprise wiki & knowledge management | IT service management | Customer support tracking |

System Requirements

Operating System: Windows 2000 / XP / Vista / 7

Database: Microsoft SQL Server 2008 and above, Microsoft SQL Express 2000 and above, Oracle 9i and above, MySQL 5.0 and above

Application Server: Microsoft IIS 5.0 and above

Framework: .Net 2.0 and above

Supported Web Browsers: Internet Explorer 6.0 and above, Google Chrome 5.0 and above, Firefox 3.0 and above, Safari 4.0 and above

Supported Virtual Servers: VMware Server, VMware ESX

1.800.439.7782

www.techexcel.com