



# TechExcel DevTrack

Industry Leading Defect and Task Tracking

DevTrack comprehensively tracks and manages all product defects, change requests, tasks, and any other development issues. By doing so in an effective and simplified manner it also facilitates collaboration between different users, teams, and even customers. Flexible workflows and process automations, robust searching and reporting, and comprehensive point-and-click customization mean that DevTrack is a solution that will morph to meet your unique needs while remaining scalable enough to grow with you team.

## Elegant, Powerful, & Easy to Use

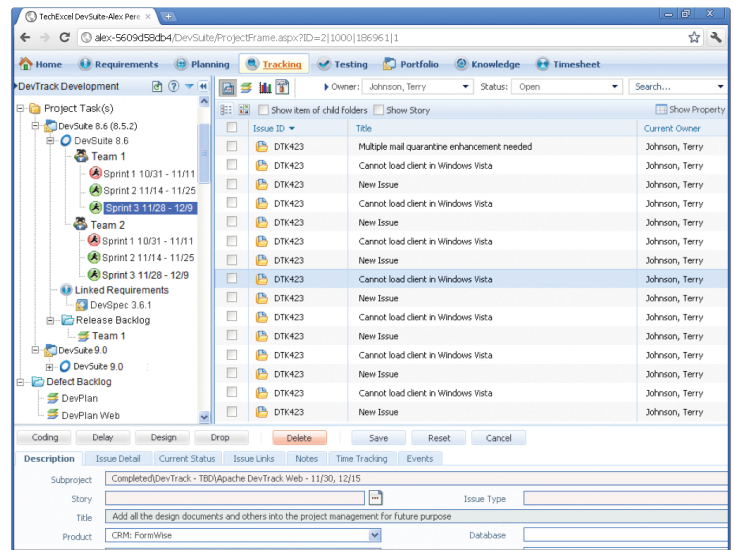
DevTrack provides an intuitive Web 2.0 interface, allowing users to become familiar with the system quickly. The drag-and-drop controls and thoughtfully designed right-click operations make using DevTrack nearly effortless.

## Integrated Development Spaces

Easily view and manage the full scope of projects from within one interface. Each Development Space can encompass not only development iterations but also requirements from DevSpec and test cases from DevTest.

## Benefits

- Assign requirements and manage test cases without ever leaving the DevTrack interface.
- Comprehensive issue tracking and management
- Sophisticated and flexible workflows
- Advanced automated email notifications
- Fully customizable user interface
- Inter-project automations between linked tasks
- Robust and reliable framework that is easily scalable for enterprise deployments
- Integration with many version control tools (Microsoft TFS, VSS, Subversion, Perforce, ClearCase, AccuRev, CVS, and many more)
- Built-in Presentation Quality Reports and Analysis

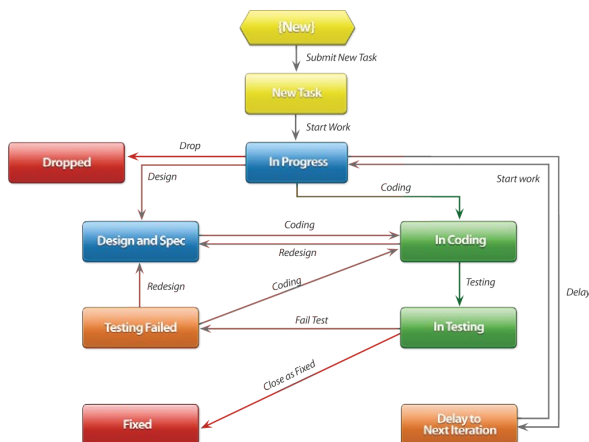


The ease-of-use is incredible and the learning curve was very small - most users were trained in under 10 minutes. The performance of DevTrack has been exceptional.

Shirley Siler Foote, QA Manager Micro Information Products

## Workflow and Process Automation

Easily definable workflows allows you to create and control task states, transitions, and applicable owners to ensure that every issue is verified, resolved, tested, integrated, and released as appropriate for your organization, while automatic skill-based routing of new issues guarantees that each team member is always assigned issues to resolve.



## Seamless version control integration

DevTrack provides seamless integration with version control software, allowing users to automatically associate an Issue in DevTrack with the check in/check out operations of their SCM system.



## Solution Templates help speed your successful deployment

With Solution Templates, DevTrack is pre-configured to deliver powerful configurations out-of-the-box. Solution Templates are tailored to support a variety of business processes. By selecting the template that most closely matches your process, you can quickly begin using DevTrack.

DevTrack helps us make our deadlines and focus our resources. I would say that we are anywhere from 25 to 40 percent more productive using DevTrack... When you realize that a difference of three or four percent is the difference between profit and loss, 30 percent is really significant.

Pierre Cloutier, Partner Progeny Software

## Easy to Install, Customize, and Use

DevTrack is designed for the easiest possible installation and customization. Using a simple point-and-click interface, you can easily add users and assign their system privileges, create groups and group folders, customize all field labels and menu options, setup field relationships, enable and customize workflows, add automatic routing and notification, and much more!

### Two ways to try DevTrack Today!

- Try live instantly on our demo system
- Request a demo and free evaluation system



[www.techexcel.com/devtrack](http://www.techexcel.com/devtrack)

## About TechExcel

TechExcel unifies the enterprise by bridging the gap between product development and service / support. This end-to-end environment empowers companies to optimize the relationship between these important organizations without sacrificing autonomy or business processes and provides a collaborative environment that significantly saves time and resources.

### Other TechExcel Products

DevSpec	DevTrack	DevTest	DevPlan	Portfolio	KnowledgeWise	ServiceWise	CustomerWise
Requirements management	Issue and task tracking	Complete quality management	Project and agile planning	Product portfolio management	Enterprise wiki & knowledge management	IT service management	Customer support tracking

## System Requirements

**Operating System:** Windows 2000 / XP / Vista / 7

**Database:** Microsoft SQL Server 2008 and above, Microsoft SQL Express 2000 and above, Oracle 9i and above, MySQL 5.0 and above

**Application Server:** Microsoft IIS 5.0 and above

**Framework:** .Net 2.0 and above

**Supported Web Browsers:** Internet Explorer 6.0 and above, Google Chrome 5.0 and above, Firefox 3.0 and above, Safari 4.0 and above

**Supported Virtual Servers:** VMware Server, VMware ESX

1.800.439.7782

[www.techexcel.com](http://www.techexcel.com)